

# Meat Market Report

30/04/18 - 06/05/18

Week  
18



**An Roinn Talmhaíochta,  
Bia agus Mara**  
Department of Agriculture,  
Food and the Marine

# MARKET SUMMARY

## Beef

### Deadweight Prices c/100Kg (Including VAT)

	U3	U4	R3	R4	O3	O4	P+
Steers	436.9	437.1	423.6	425.4	405.7	410.7	387.1
Heifers	450.8	450.4	435.8	436.4	418.0	417.5	388.5
Young Bulls	432.5	436.1	420.7	423.4	398.9	408.1	387.2
Cows			384.1	381.5	359.8	359.2	349.5

### Liveweight Prices

*Bull Calf Average Price	€163.9 per head (Excluding VAT)
**Young Store Average Price	€241.0 per 100kg (Excluding VAT)
***Yearling (male & female) Price	€215.0 per 100kg (Excluding VAT)

\* Aged 8-28 days \*\* Aged 180-364 days, Male & Female \*\*\*age 365-730 days

### Slaughterings

30,984 cattle slaughtered this week, of which steers were 10,945 (35%), heifers 8,765 (28%), young bulls 3,500 (11%) and cows 7,098 (23%). Total slaughter is 591,602 compared to 571,132 in 2017, an 3.6% increase.

### Live Trade

9,368 cattle were exported in the week commencing 23/04/2018\*;8,827 to EU (Except NI). Live exports for 2018 amount to 119,181 compared to 101,212 in 2017, up 18% on 2017 levels.

\*This data is provisional and subject to revision.

The next meeting of the Management Committee for the Common Organisation of Agricultural Markets (Animal Products Sector) is 17 May 2018

### CONTENTS:

Page 2: Market Summary Beef  
 Page 3: Market Summary Other Meats  
 Page 4: Beef Price and Slaughter Summary  
 Page 5: Comparative Beef Prices  
 Page 6: Steer and Young Bull Price  
 Page 7: Heifer and Cow Graphs  
 Page 8: Price and Slaughter Graphs  
 Page 9: Liveweight Beef Graphs

Page 10: Beef Export Maps  
 Page 11: Beef Export Info  
 Page 12: Market Access Update  
 Page 13: Pig Price Graph  
 Page 14: Pig Slaughtering  
 Page 15: Sheep Prices  
 Page 16: Sheep Slaughterings  
 Page 17: Poultry Slaughtering

# MARKET SUMMARY

## Pigmeat

Grade E Pig  
Prices (Ex.  
VAT)

The Grade E Pig price for week commencing 30/04/2018 was €140.02 per 100Kg. This compares to €164.80 in the same week last year, a 15.0% decrease.

[Further details available on page 13](#)

Slaughtering

69,464 pigs were slaughtered in week 18 of which 2,011 were sows. The cumulative figure for pig slaughterings in 2018 is 1,183,671 which is up 6% against the same point last year.

[Further details available on page 14](#)

## Sheepmeat

Sheepmeat  
Prices (Ex.  
VAT)

The national average price for the week commencing 30/04/2018 was €594.99 per 100Kg, an increase of 18.5% over the same week last year.

[Further details available on page 15](#)

Slaughtering

50,458 sheep were slaughtered at sheep export premises the week commencing 30/04/2018, compared to 46,302 in the same week of 2017. Sheep slaughterings for 2018 are up 2% on 2017 at 907,000 head.

[Further details available on page 16](#)

Live Trade

Total live exports stand at 35,356 head up to the end of 2017.

## Poultry

Slaughtering

Cumulative poultry slaughterings for 2018\* stand at 31,723,926 birds at the end of week 17, up 2.7% compared to the same period last year.

[Further details available on page 17](#)

\*Latest Figures are provisional and subject to change

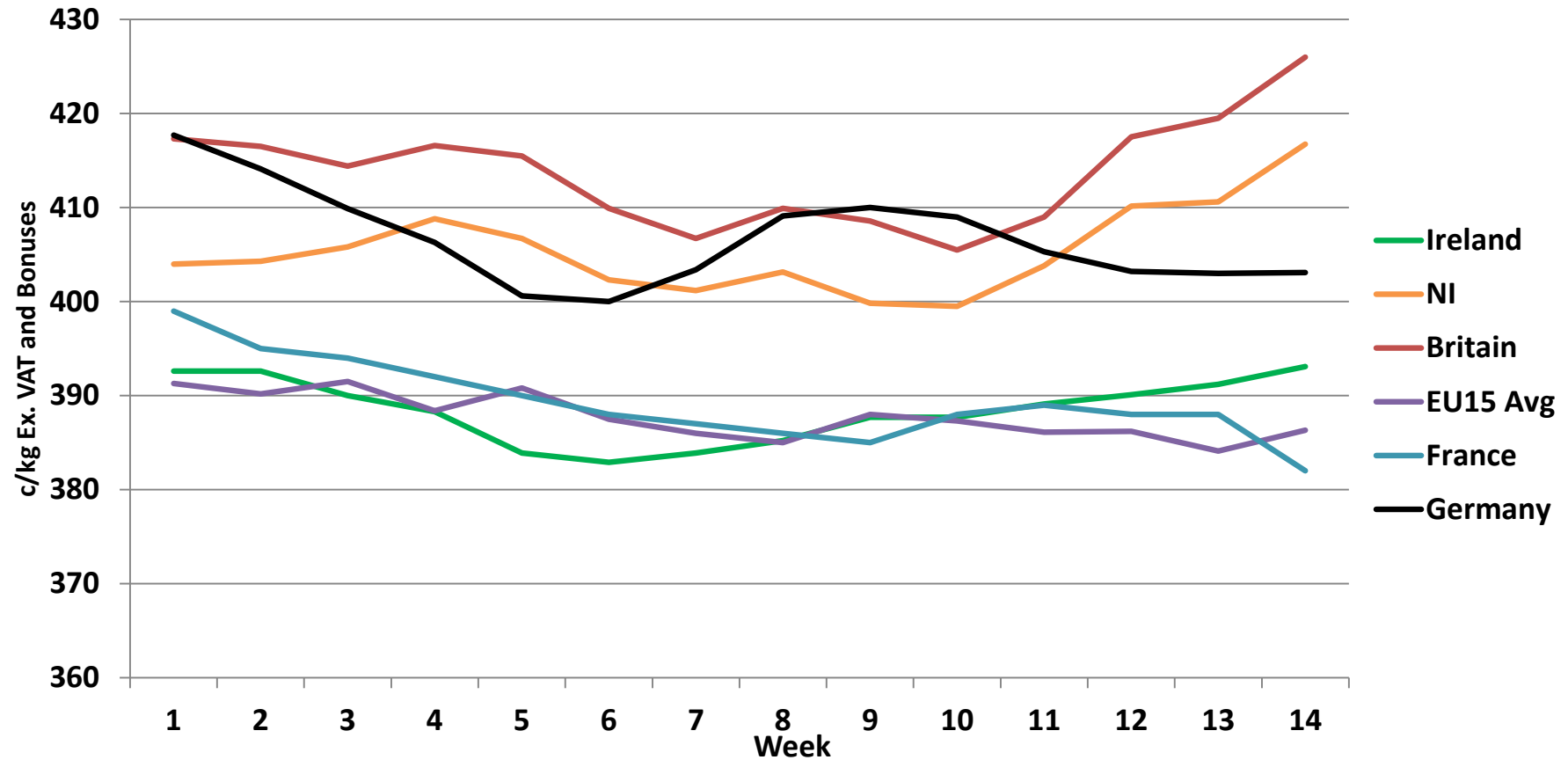
Dead Weight Prices	W/C	W/C	Same week 2017	% change prev week	% change 2017
	30/04/18	23/04/18	01/05/17		
Steers (R3) (c/kg)	401.9	399.4	397.2	0.6%	1.2%
Heifers (R3) (c/kg)	413.5	410.4	408.7	0.8%	1.2%
Young Bulls (U3) (c/kg)	410.4	403.2	399.9	1.8%	2.6%
Cows (04) (c/kg)	340.8	338.9	330.3	0.6%	3.2%

Live Weight Prices	W/C	W/C	Same week 2017	% change previous week	% change 2017
	30/04/18	23/04/18	01/05/17		
Yearlings (Male) (Aged 365 - 730 days) - (€/100Kg)	213	209	212	1.9%	0.5%
Yearlings (Female) (Aged 365 - 730 days) - (€/100Kg)	217	214	222	1.4%	-2.3%
Young Stores (Male & Female) (Aged 180 - 364 days) - (€/100Kg)	241	239	247	0.8%	-2.4%
Bull Calf (€/head) Dairy	142.0	139.5	160.1	1.8%	-11.3%
Bull Calf (€/head) Beef	185.9	184.2	216.2	0.9%	-14.0%
Bull Calf (€/head) Average	163.9	161.8	188.2	1.3%	-12.9%

Slaughter Figures	% of weekly figures	W/C	Same week 2017	Year to Date		Change 2018 v 2017	
		30-Apr-18		2018	2017	Head	%
Steers	35.3%	10,945	10,558	204,158	204,575	-417	-0.2%
Cows	22.9%	7,098	6,555	125,186	118,013	7,173	6.1%
Heifers	28.3%	8,765	7,993	172,829	164,562	8,267	5.0%
Young Bulls	11.3%	3,500	3,401	79,015	75,077	3,938	5.2%
Mature Bulls	2.2%	676	700	10,414	8,905	1,509	16.9%
<b>Total</b>	<b>100%</b>	<b>30,984</b>	<b>29,207</b>	<b>591,602</b>	<b>571,132</b>	<b>20,470</b>	<b>3.6%</b>

Live Exports	W/C	Same week 2017	W/C	Year to Date		Change 2018 v 2017	
	23-Apr-18		16-Apr-18	2018	2017	Head	%
Northern Ireland	479	642	371	5,572	9,538	-3,966	-42%
EU Except NI	8,827	5,335	8,774	106,937	87,050	19,887	23%
Third Countries	62	3,036	0	6,672	4,624	2,048	-
<b>Total</b>	<b>9,368</b>	<b>9,013</b>	<b>9,145</b>	<b>119,181</b>	<b>101,212</b>	<b>17,969</b>	<b>18%</b>
Calves YTD:		100,801	Adult Cattle YTD:		18,380		

## Irish Deadweight Cattle Prices vs Selected Other Markets, 2018

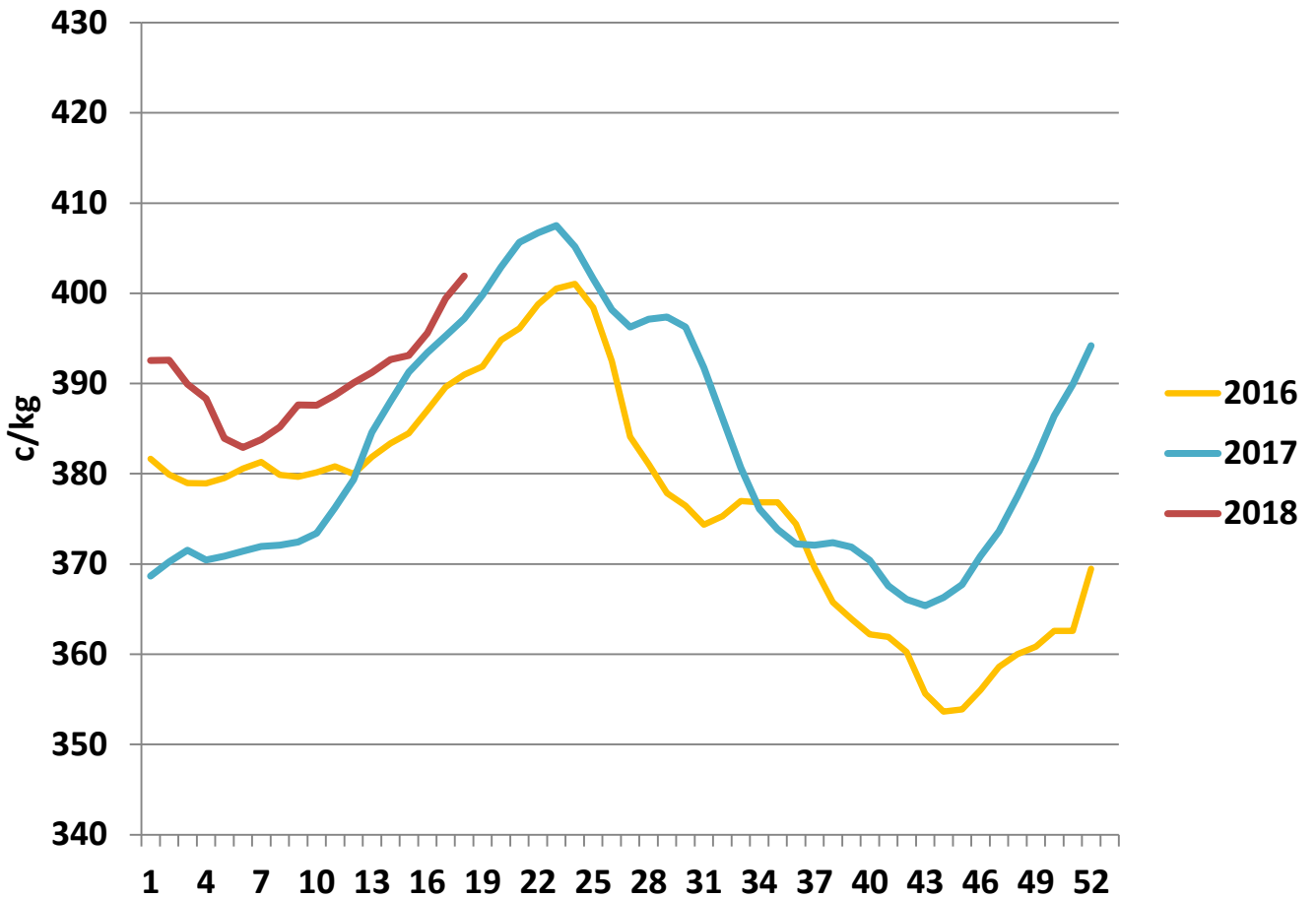


### Livestock Pricing

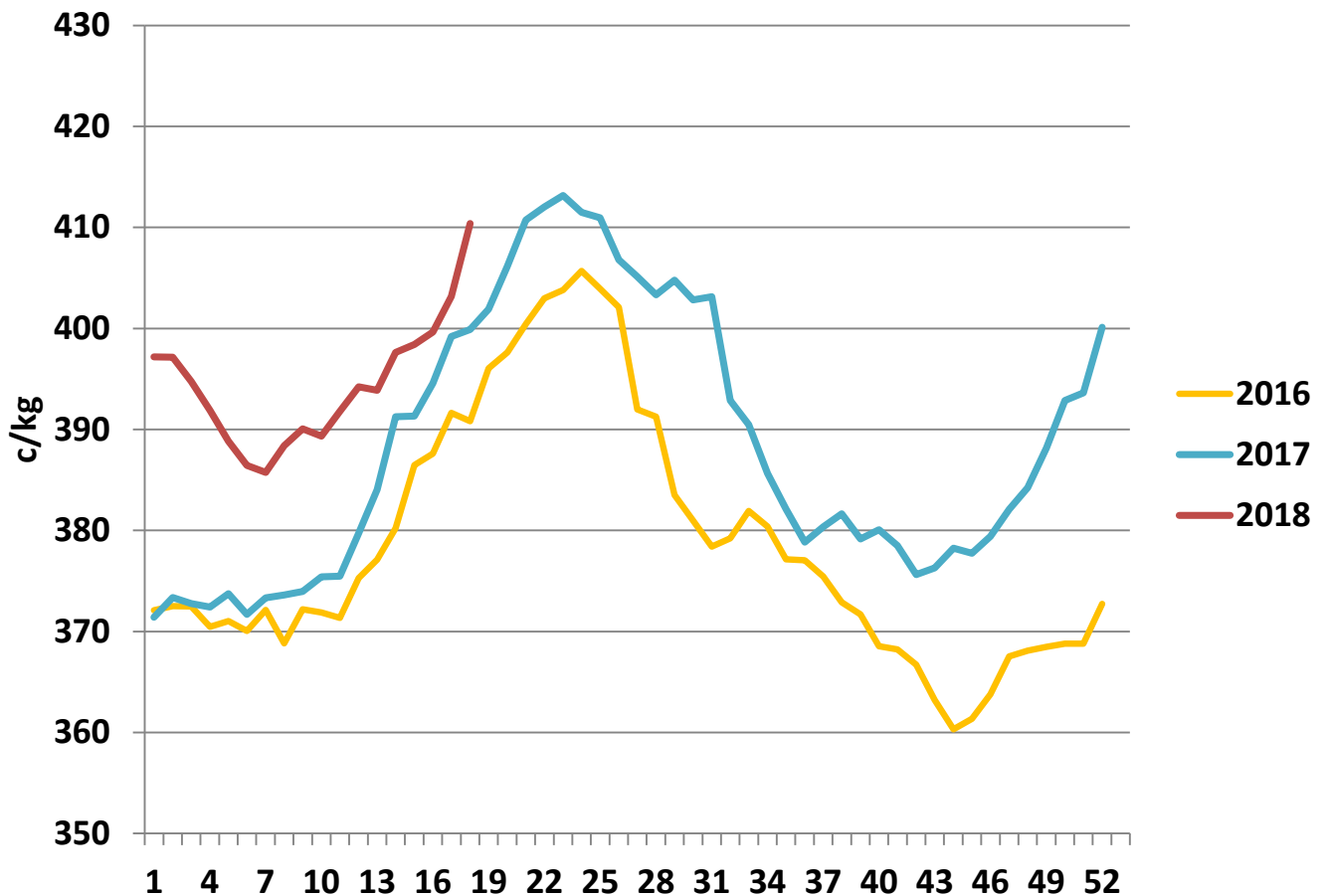
	Ireland	NI	Britain	EU 15 Average	France	Germany
<b>W/C 16/04/18</b>	<b>389.7</b>	<b>416.2</b>	<b>424.95</b>	<b>384.33</b>	<b>378</b>	<b>399.9</b>

All prices ex. VAT and bonuses. Prices are c/kg most recent available for R3 Steers for Ireland, NI & GB, R3 Young Bulls for EU, France & Germany.

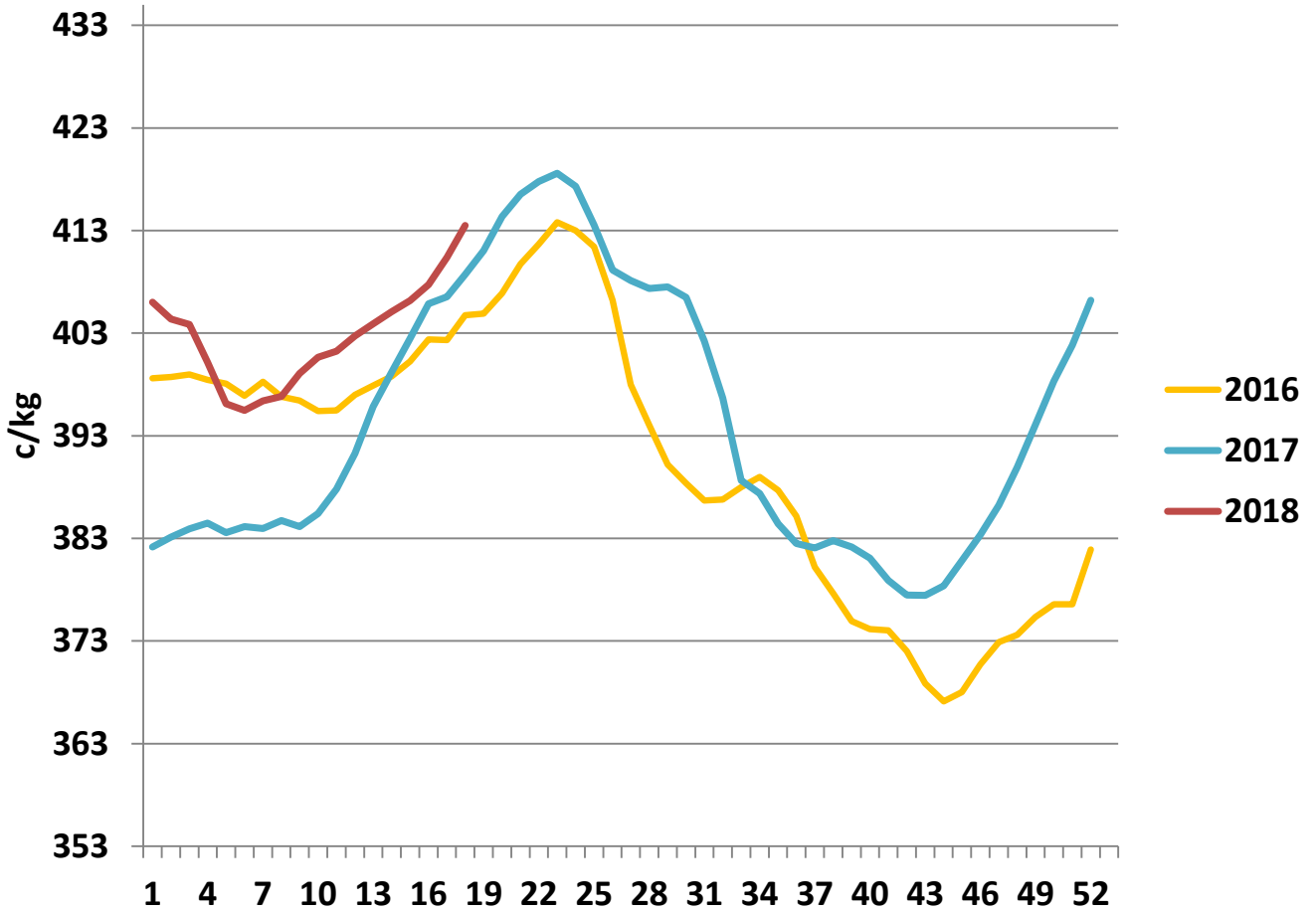
### R3 Steer prices ex. VAT



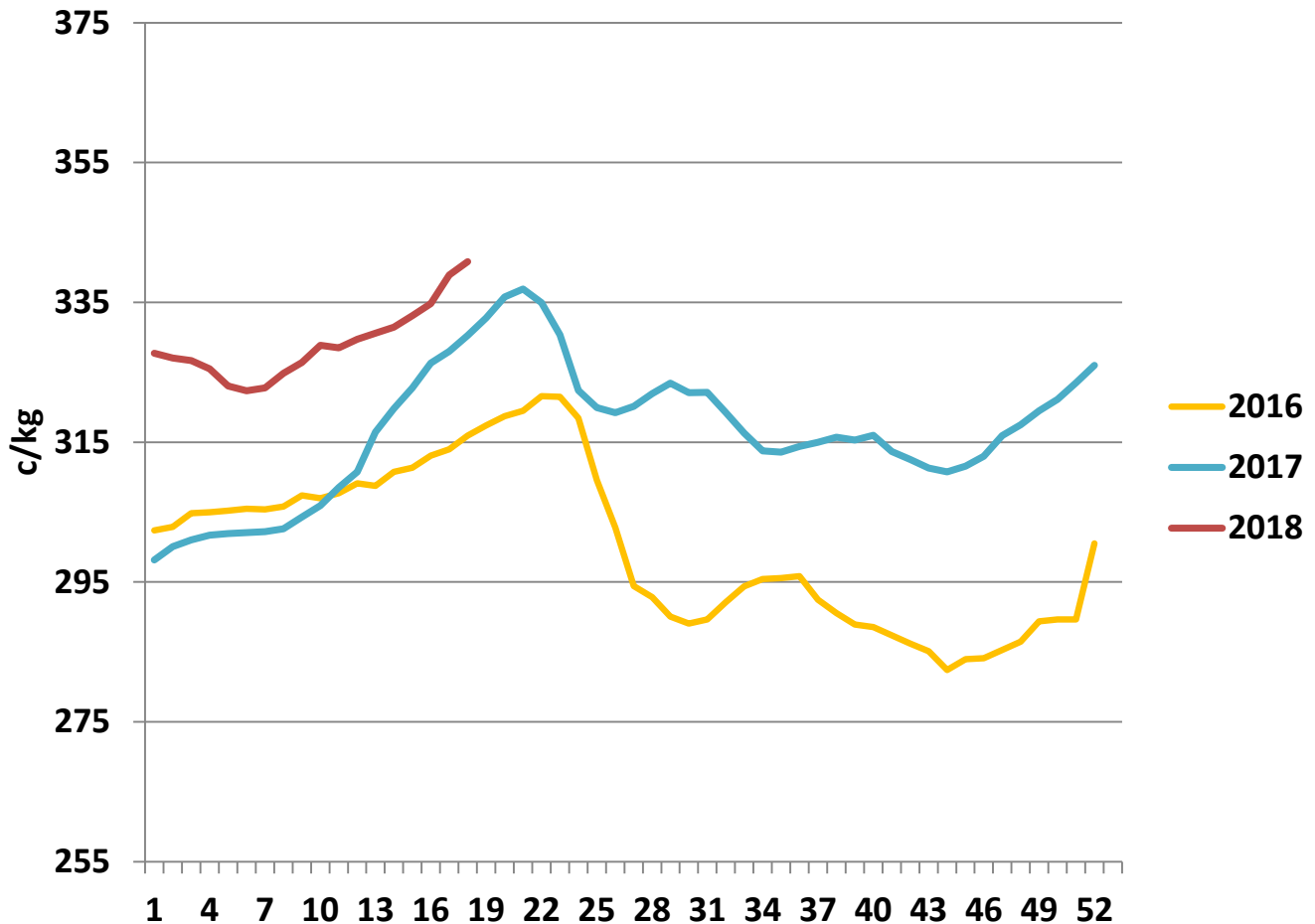
### U3 Young Bull prices ex. VAT



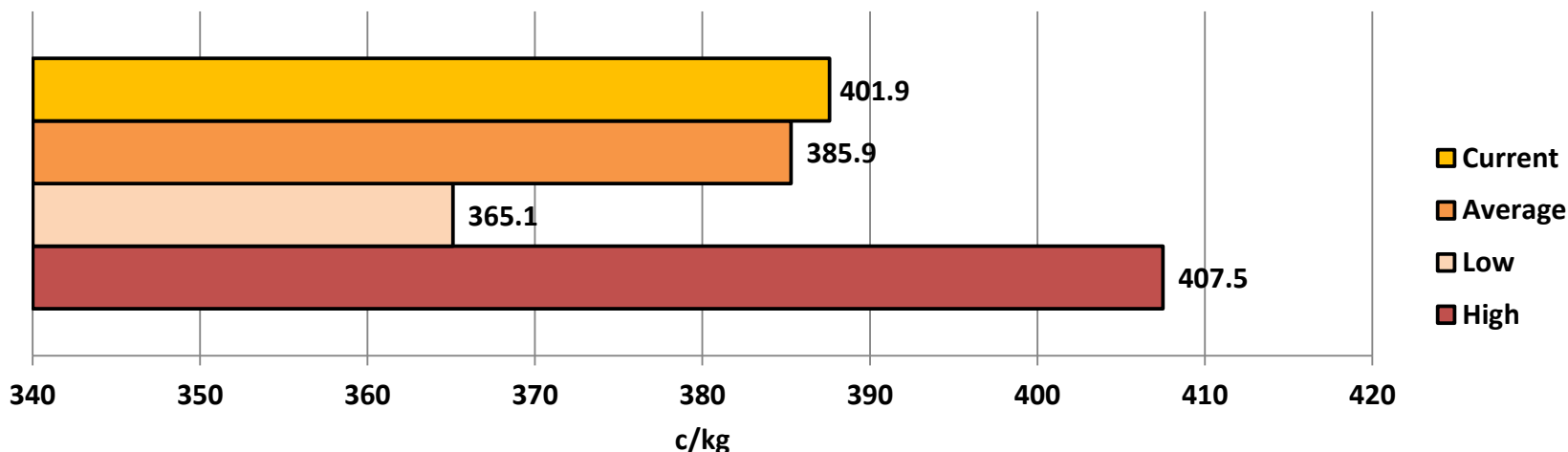
### R3 Heifer prices ex. VAT



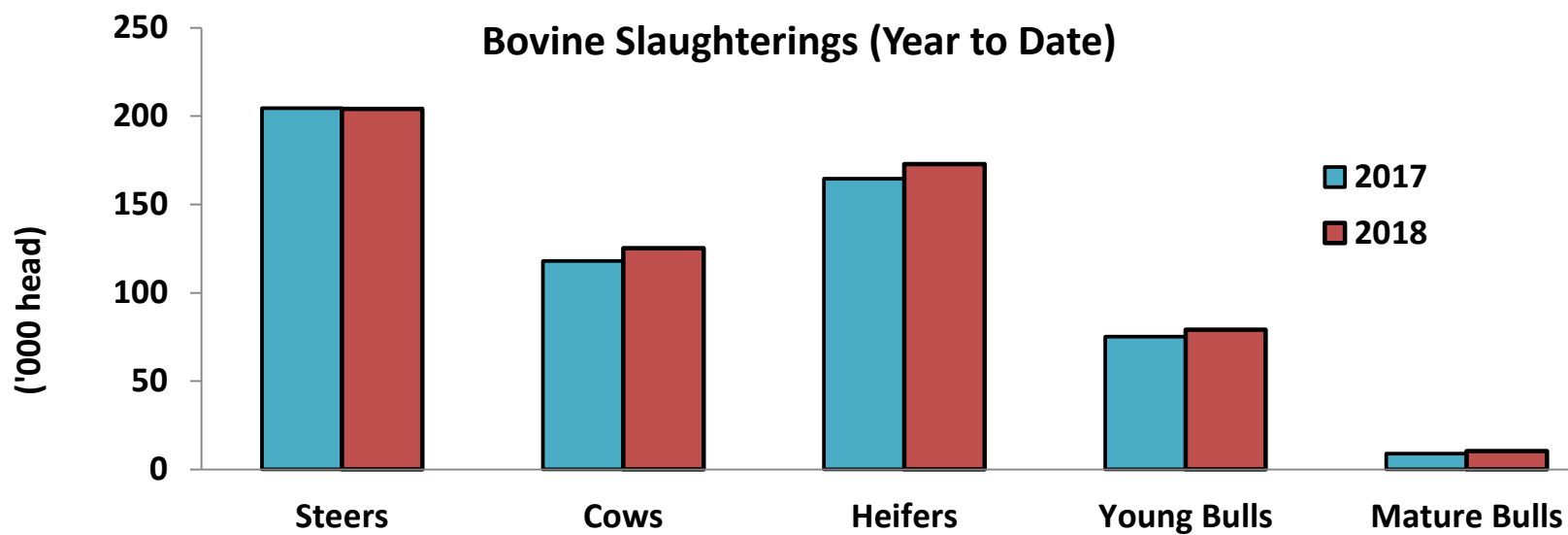
### O4 Cow prices ex. VAT



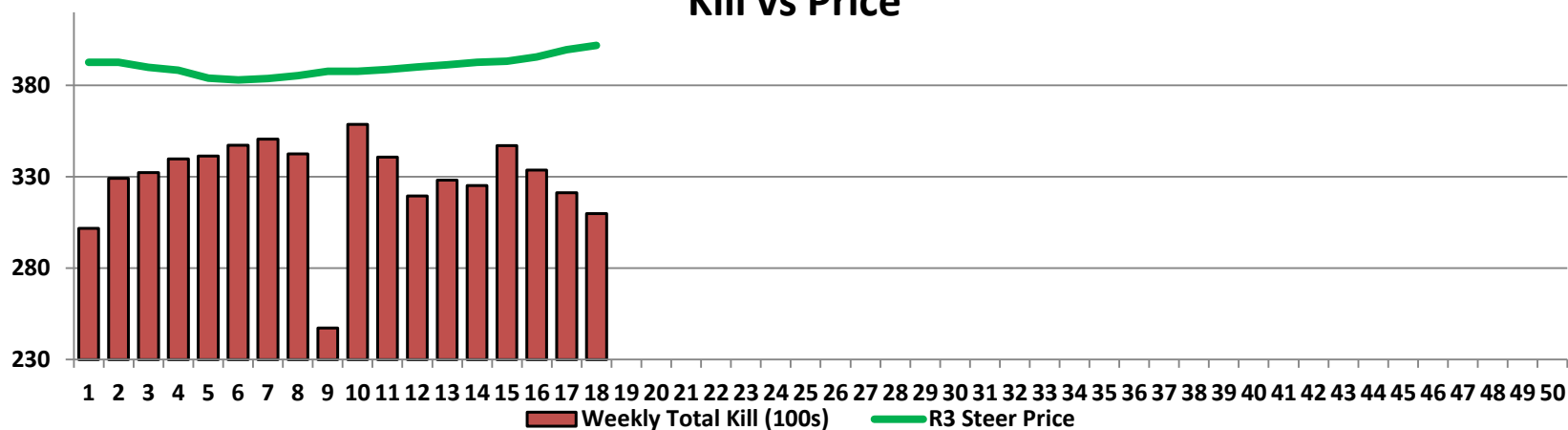
### 12 Month R3 Steer Statistics



### Bovine Slaughtering (Year to Date)

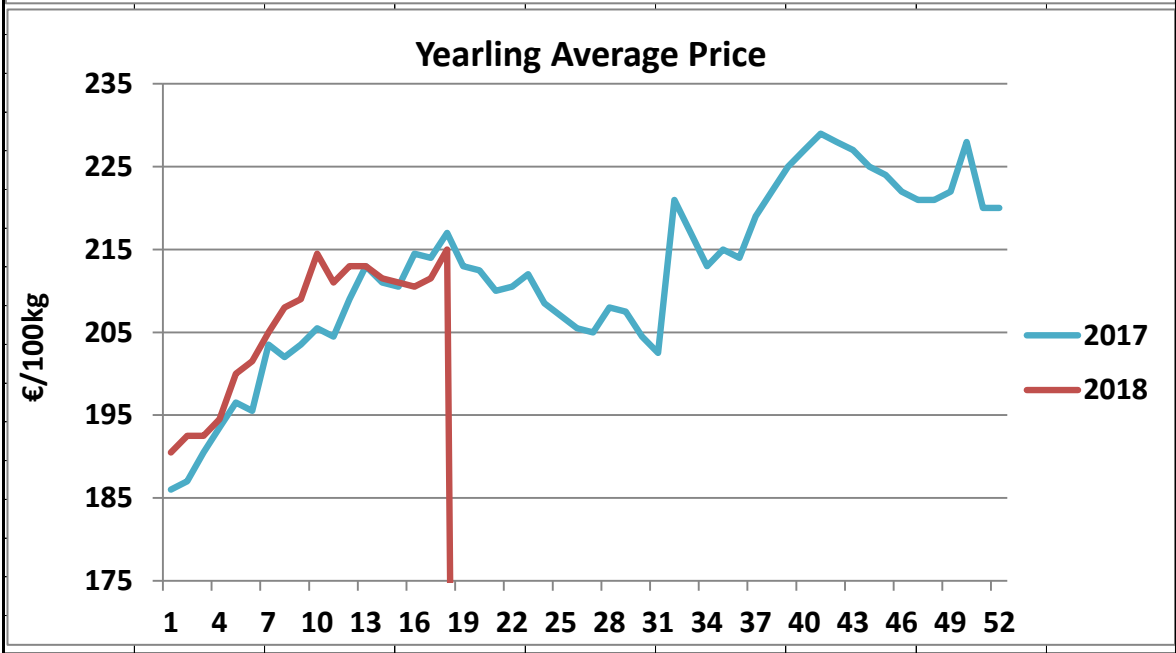
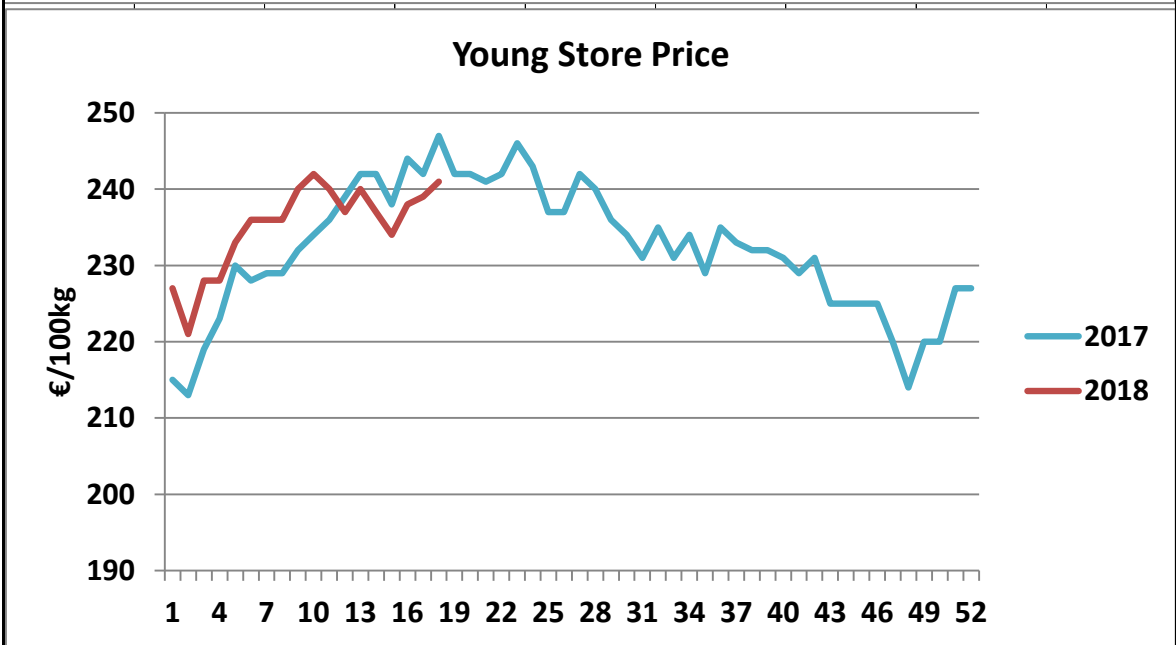
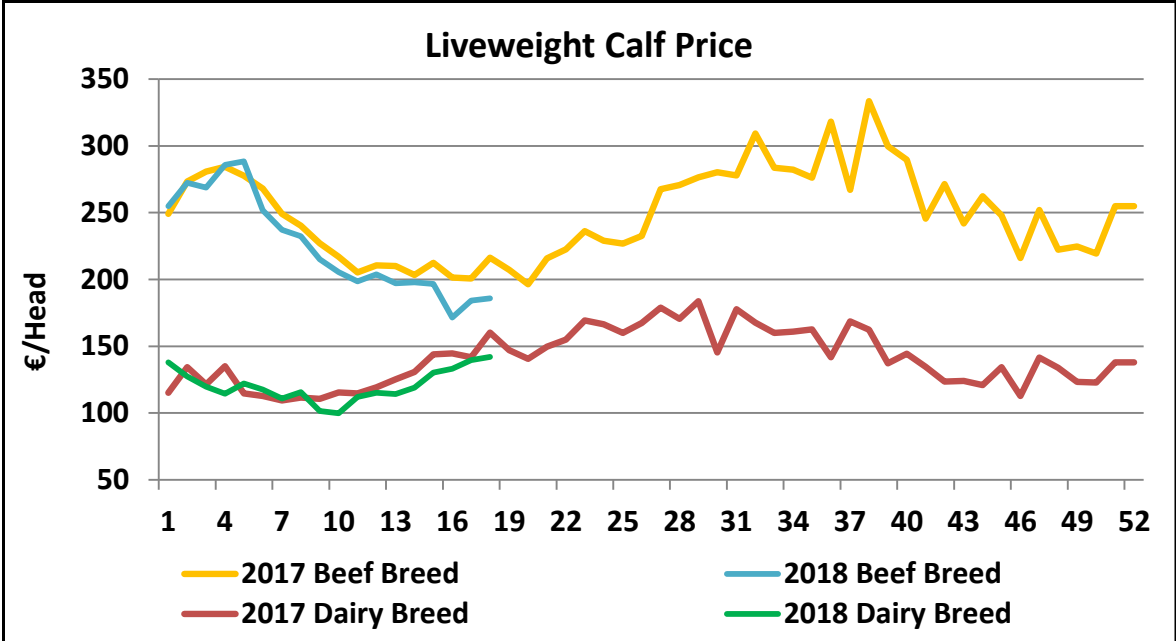


### Kill vs Price





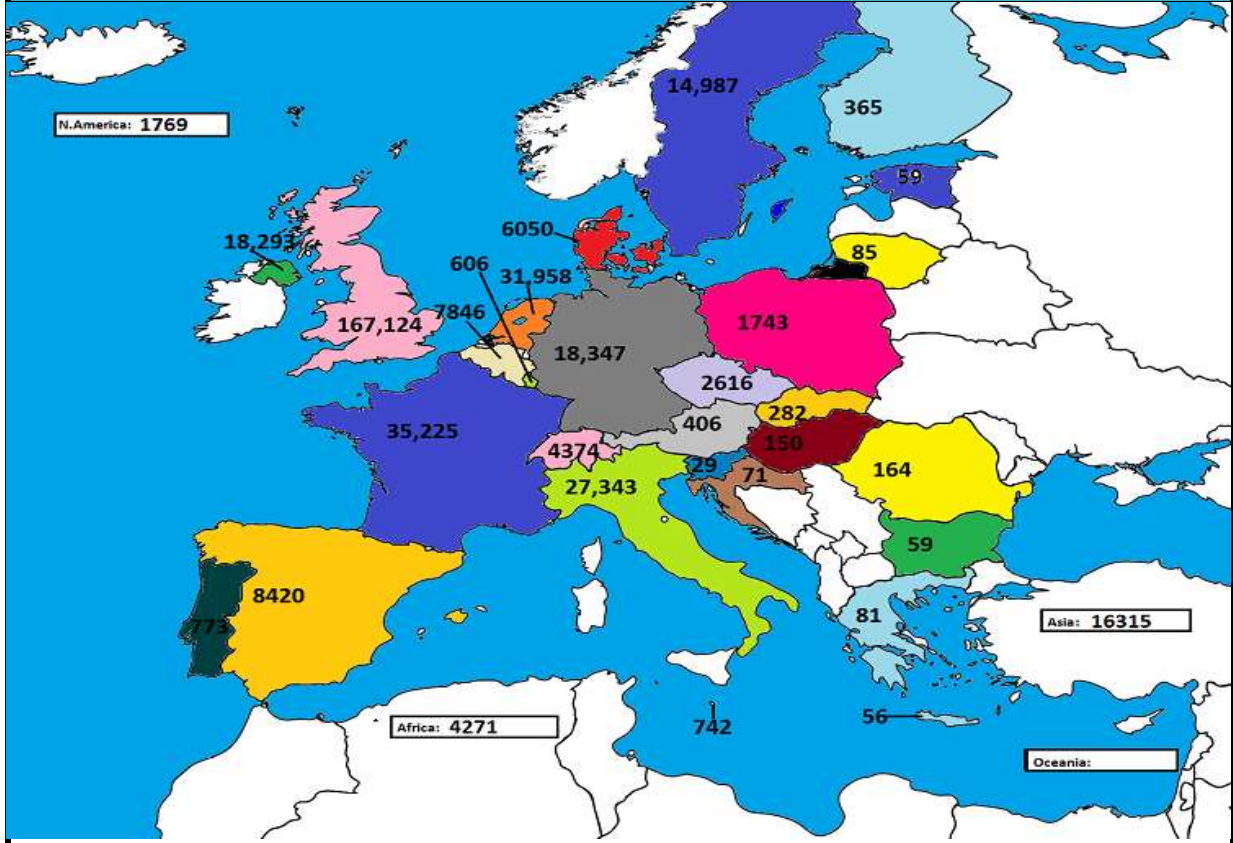
EU LIVE CATTLE REPORT														
Week	Yearling M		Yearling F		Yearling Average		Bull Calf Dairy		Bull Calf Beef		Bull Calf Avg		Young Store	Young Store
	2018	2017	2018	2017	2018	2017	2018	2017	2018	2017	2018	2017	2018	2017
	€/100kg	€/100kg	€/100kg	€/100kg	€/100kg	€/100kg	€/head	€/head	€/head	€/head	€/head	€/head	€/100kg	€/100kg
1	186.0	181.0	195.0	191.0	190.5	186.0	138.0	115.0	255.0	249.1	196.5	182.0	227	215
2	187.0	180.0	198.0	194.0	192.5	187.0	127.3	134.3	272.4	273.4	199.9	203.8	221	213
3	189.0	187.0	196.0	194.0	192.5	190.5	119.8	121.4	268.7	280.8	194.2	201.1	228	219
4	191.0	190.0	198.0	197.0	194.5	193.5	114.4	135.0	285.7	284.2	200.1	209.6	228	223
5	195.0	190.0	205.0	203.0	200.0	196.5	122.1	114.8	288.3	277.6	205.2	196.2	233	230
6	199.0	191.0	204.0	200.0	201.5	195.5	117.5	112.8	251.8	267.9	184.7	190.4	236	228
7	205.0	194.0	205.0	213.0	205.0	203.5	110.7	109.5	237.0	249.1	173.9	179.3	236	229
8	207.0	199.0	209.0	205.0	208.0	202.0	115.6	111.5	232.3	240.4	173.9	175.9	236	229
9	204.0	195.0	214.0	212.0	209.0	203.5	101.4	110.6	215.1	227.0	158.3	168.8	240	232
10	213.0	200.0	216.0	211.0	214.5	205.5	99.9	115.5	205.5	217.1	152.7	166.3	242	234
11	209.0	199.0	213.0	210.0	211.0	204.5	112.0	114.5	198.5	205.2	155.3	159.9	240	236
12	212.0	205.0	214.0	213.0	213.0	209.0	115.1	119.2	203.8	210.6	159.4	164.9	237	239
13	212.0	208.0	214.0	218.0	213.0	213.0	114.3	125.2	197.2	210.1	155.7	167.7	240	242
14	210.0	207.0	213.0	215.0	211.5	211.0	118.9	130.7	197.9	203.3	158.4	167.0	237	242
15	209.0	206.0	213.0	215.0	211.0	210.5	130.3	143.9	196.7	212.6	163.5	178.2	234	238
16	208.0	210.0	213.0	219.0	210.5	214.5	133.0	144.6	171.4	201.4	152.2	173.0	238	244
17	209.0	211.0	214.0	217.0	211.5	214.0	139.5	141.8	184.2	200.6	161.8	171.2	239	242
18	213.0	212.0	217.0	222.0	215.0	217.0	142.0	160.1	185.9	216.2	163.9	188.2	241	247
19		207.0		219.0	-	213.0		147.0		207.1	-	177.0		242
20		206.0		219.0	-	212.5		140.6		196.4	-	168.5		242
21		204.0		216.0	-	210.0		149.6		215.7	-	182.7		241
22		203.0		218.0	-	210.5		154.8		222.4	-	188.6		242
23		205.0		219.0	-	212.0		169.3		236.2	-	202.7		246
24		203.0		214.0	-	208.5		166.5		229.1	-	197.8		243
25		200.0		214.0	-	207.0		159.8		226.8	-	193.3		237
26		199.0		212.0	-	205.5		167.4		232.5	-	200.0		237
27		197.0		213.0	-	205.0		178.9		267.6	-	223.2		242
28		201.0		215.0	-	208.0		170.5		270.8	-	220.6		240
29		202.0		213.0	-	207.5		183.6		276.5	-	230.0		236
30		197.0		212.0	-	204.5		145.2		280.3	-	212.8		234
31		197.0		208.0	-	202.5		177.6		277.8	-	227.7		231
32		194.0		206.0	-	221.0		167.5		309.3	-	238.4		235
33		193.0		205.0	-	217.0		159.9		283.6	-	221.7		231
34		193.0		203.0	-	213.0		161.0		282.3	-	221.6		234
35		191.0		200.0	-	215.0		162.7		276.1	-	219.4		229
36		193.0		206.0	-	214.0		141.9		318.1	-	230.0		235
37		194.0		200.0	-	219.0		168.6		267.2	-	217.9		233
38		190.0		197.0	-	222.0		162.4		333.6	-	248.0		232
39		187.0		195.0	-	225.0		137.2		299.7	-	218.4		232
40		185.0		194.0	-	227.0		144.3		289.7	-	217.0		231
41		186.0		194.0	-	229.0		134.6		245.5	-	190.0		229
42		189.0		198.0	-	228.0		123.5		271.5	-	197.5		231
43		184.0		192.0	-	227.0		124.0		241.9	-	183.0		225
44		182.0		190.0	-	225.0		120.8		262.4	-	191.6		225
45		182.0		193.0	-	224.0		134.3		247.8	-	191.0		225
46		183.0		193.0	-	222.0		112.8		216.0	-	164.4		225
47		186.0		194.0	-	221.0		141.6		252.1	-	196.8		220
48		184.0		193.0	-	221.0		133.8		222.2	-	178.0		214
49		185.0		194.0	-	222.0		123.2		224.6	-	173.9		220
50		187.0		194.0	-	228.0		122.7		219.5	-	171.1		220
51		187.0		194.0	-	220.0		138.0		255.0	-	196.5		227
52		187.0		194.0	-	220.0		138.0		255.0	-	196.5		227
Year Av	203.2	194.8	208.4	205.2	205.8	212.0	120.7	140.8	224.8	248.8	172.8	194.8	235.2	232.2



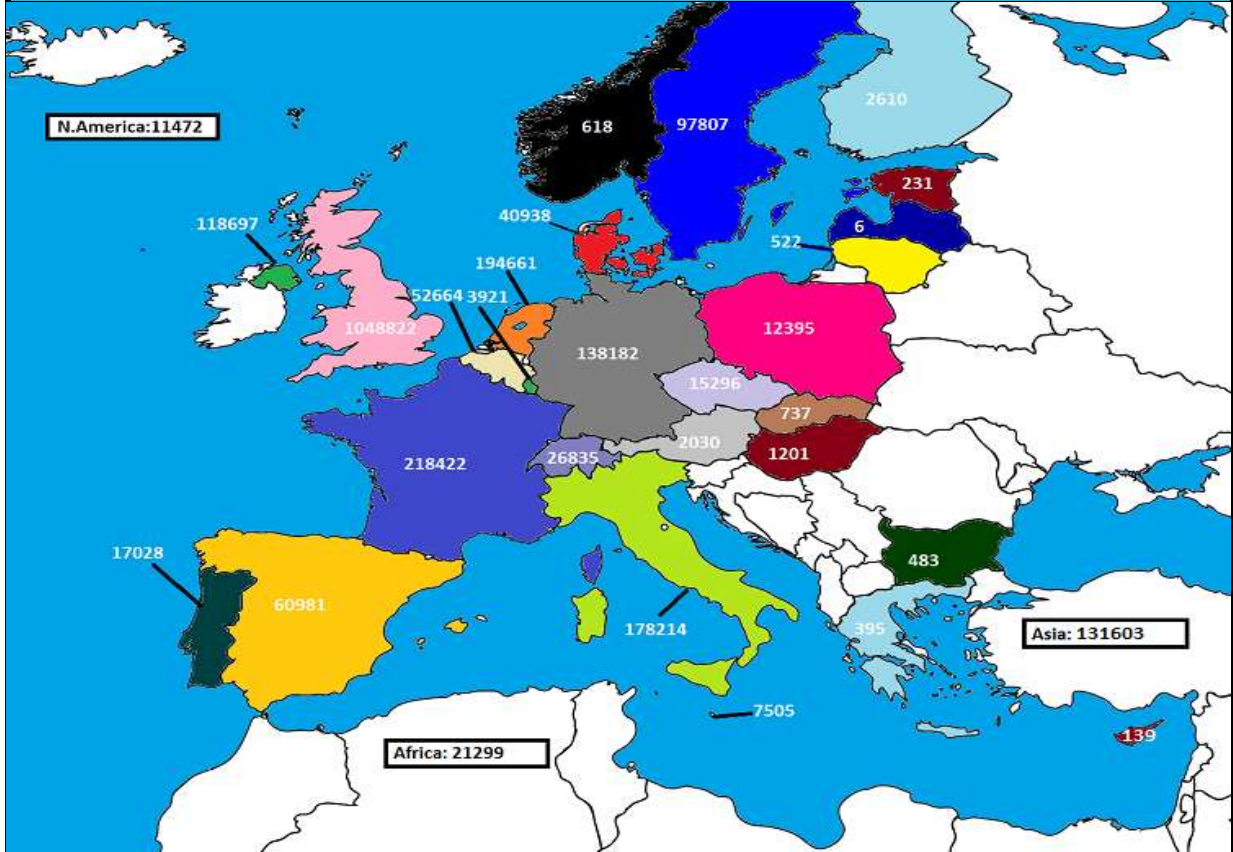
**TOTAL WEEKLY BOVINE SLAUGHTERINGS**

Week	Steers		Y Bulls		Bulls		Heifers		Cows		Weekly Total		Cumulative		2018 vs 2017	
	2018	2017	2018	2017	2018	2017	2018	2017	2018	2017	2018	2017	2018	2017	Difference	%
1	10,299	9,409	5,173	4,716	226	261	9,840	8,582	4,649	5,022	30,187	27,990	30,187	27,990	2,197	7.8%
2	10,255	10,489	5,661	5,295	338	342	10,286	9,624	6,377	6,315	32,917	32,065	63,104	60,055	3,049	5.1%
3	10,847	10,306	5,886	5,348	347	381	9,931	9,573	6,219	6,545	33,230	32,153	96,334	92,208	4,126	4.5%
4	10,860	10,869	5,600	5,302	360	351	10,191	9,645	6,960	6,931	33,971	33,098	130,305	125,306	4,999	4.0%
5	10,434	10,953	5,860	5,515	664	408	9,692	9,648	7,488	7,627	34,138	34,151	164,443	159,457	4,986	3.1%
6	11,153	11,172	5,737	5,290	552	426	10,000	10,135	7,290	7,434	34,732	34,457	199,175	193,914	5,261	2.7%
7	11,871	11,963	5,038	5,299	619	513	9,977	9,667	7,550	7,181	35,055	34,623	234,230	228,537	5,693	2.5%
8	11,168	12,537	4,871	4,581	667	597	10,124	10,055	7,419	7,136	34,249	34,906	268,479	263,443	5,036	1.9%
9	8,844	12,884	3,533	4,348	358	510	7,330	9,817	4,669	7,066	24,734	34,625	293,213	298,068	-4,855	-1.6%
10	13,330	12,524	4,966	3,688	885	506	9,647	9,577	7,028	7,010	35,856	33,305	329,069	331,373	-2,304	-0.7%
11	11,949	10,950	3,797	3,049	636	533	10,231	8,168	7,454	5,724	34,067	28,424	363,136	359,797	3,339	0.9%
12	11,691	11,892	3,314	3,295	652	501	9,414	9,428	6,885	6,130	31,956	31,246	395,092	391,043	4,049	1.0%
13	11,850	11,508	3,477	3,089	672	505	9,400	8,619	7,414	6,295	32,813	30,016	427,905	421,059	6,846	1.6%
14	11,757	11,923	3,058	3,075	676	501	9,334	8,303	7,689	6,729	32,514	30,531	460,419	451,590	8,829	2.0%
15	12,542	11,692	3,275	3,193	705	616	9,830	8,635	8,344	5,932	34,696	30,068	495,115	481,658	13,457	2.8%
16	12,585	11,259	3,024	2,823	609	563	9,622	8,220	7,534	5,959	33,374	28,824	528,489	510,482	18,007	3.5%
17	11,778	11,661	3,245	3,805	772	681	9,215	8,873	7,119	6,422	32,129	31,442	560,618	541,924	18,694	3.4%
18	10,945	10,532	3,500	3,401	676	700	8,765	8,010	7,098	6,562	30,984	29,205	591,602	571,129	20,473	3.6%
19		11,333		3,688		680		8,571		6,927		31,199	591,602	602,328	-10,726	-1.8%
20		10,022		4,022		716		8,349		8,301		31,410	591,602	633,738	-42,136	-6.6%
21		9,983		4,418		566		8,102		8,481		31,550	591,602	665,288	-73,686	-11.1%
22		9,494		4,802		520		7,588		10,208		32,612	591,602	697,900	-106,298	-15.2%
23		10,209		4,087		483		7,795		8,255		30,829	591,602	728,729	-137,127	-18.8%
24		12,133		4,542		622		8,709		8,300		34,306	591,602	763,035	-171,433	-22.5%
25		12,455		4,563		657		8,619		7,643		33,937	591,602	796,972	-205,370	-25.8%
26		12,571		3,776		631		9,078		7,559		33,615	591,602	830,587	-238,985	-28.8%
27		12,623		3,182		496		8,224		7,550		32,075	591,602	862,662	-271,060	-31.4%
28		12,671		2,685		648		7,554		7,824		31,382	591,602	894,044	-302,442	-33.8%
29		13,061		2,616		599		7,854		7,711		31,841	591,602	925,885	-334,283	-36.1%
30		14,827		2,430		615		7,720		6,628		32,220	591,602	958,105	-366,503	-38.3%
31		15,316		2,186		601		7,813		6,853		32,769	591,602	990,874	-399,272	-40.3%
32		15,067		1,998		553		7,620		5,961		31,199	591,602	1,022,073	-430,471	-42.1%
33		16,187		2,472		647		8,312		6,909		34,527	591,602	1,056,600	-464,998	-44.0%
34		16,900		2,510		647		8,272		6,445		34,774	591,602	1,091,374	-499,772	-45.8%
35		17,136		2,438		607		8,592		6,833		35,606	591,602	1,126,980	-535,378	-47.5%
36		17,295		2,053		675		8,582		6,819		35,424	591,602	1,162,404	-570,802	-49.1%
37		17,726		2,212		626		8,430		7,054		36,048	591,602	1,198,452	-606,850	-50.6%
38		18,658		2,041		567		8,094		6,726		36,086	591,602	1,234,538	-642,936	-52.1%
39		19,222		2,183		588		8,645		6,753		37,391	591,602	1,271,929	-680,327	-53.5%
40		18,242		2,259		538		8,860		7,740		37,639	591,602	1,309,568	-717,966	-54.8%
41		17,547		2,632		669		9,178		8,143		38,169	591,602	1,347,737	-756,135	-56.1%
42		16,991		2,866		521		8,453		7,291		36,122	591,602	1,383,859	-792,257	-57.2%
43		15,893		3,405		504		8,803		8,751		37,356	591,602	1,421,215	-829,613	-58.4%
44		13,503		3,039		549		8,215		7,726		33,032	591,602	1,454,247	-862,645	-59.3%
45		15,682		4,000		591		9,884		8,302		38,459	591,602	1,492,706	-901,104	-60.4%
46		14,960		4,452		541		10,303		8,934		39,190	591,602	1,531,896	-940,294	-61.4%
47		13,976		5,540		568		10,794		8,857		39,735	591,602	1,571,631	-980,029	-62.4%
48		13,586		5,684		528		11,532		9,143		40,473	591,602	1,612,104	-1,020,502	-63.3%
49		12,769		6,545		522		11,072		8,413		39,321	591,602	1,651,425	-1,059,823	-64.2%
50		12,576		6,265		564		10,975		7,632		38,012	591,602	1,689,437	-1,097,835	-65.0%
51		9,653		5,047		350		9,552		6,635		31,237		1,720,674	-1,720,674	-100.0%
52		6,383		4,222		117		5,513		2,692		18,927		1,739,601	-1,739,601	-100.0%
<b>TOTAL YTD</b>	<b>204,158</b>	<b>204,523</b>	<b>79,015</b>	<b>75,112</b>	<b>10,414</b>	<b>8,895</b>	<b>172,829</b>	<b>164,579</b>	<b>125,186</b>	<b>118,020</b>	<b>591,602</b>	<b>571,129</b>	<b>591,602</b>	<b>571,129</b>	<b>20,473</b>	<b>3.6%</b>

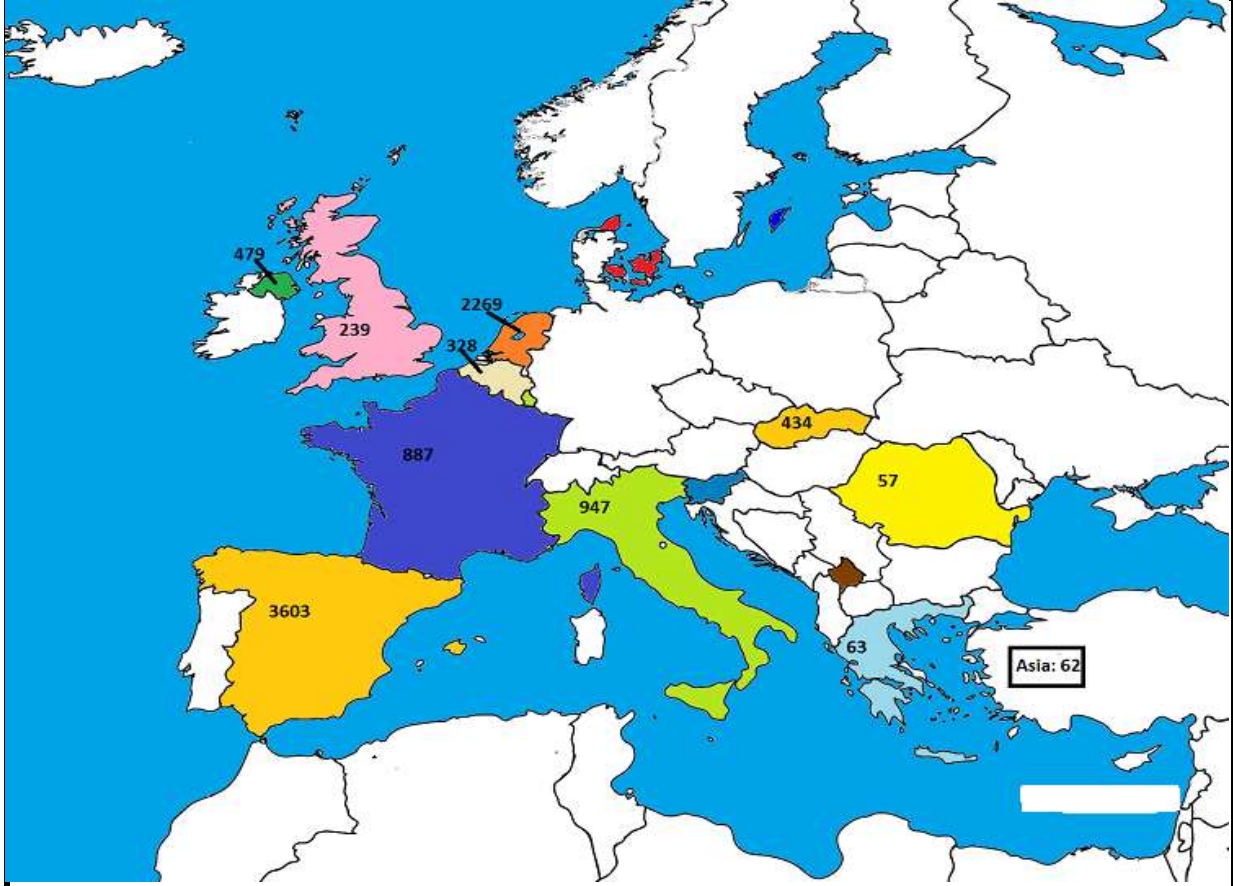
**Feb 2018 Beef exports, €000 (CSO figures)**



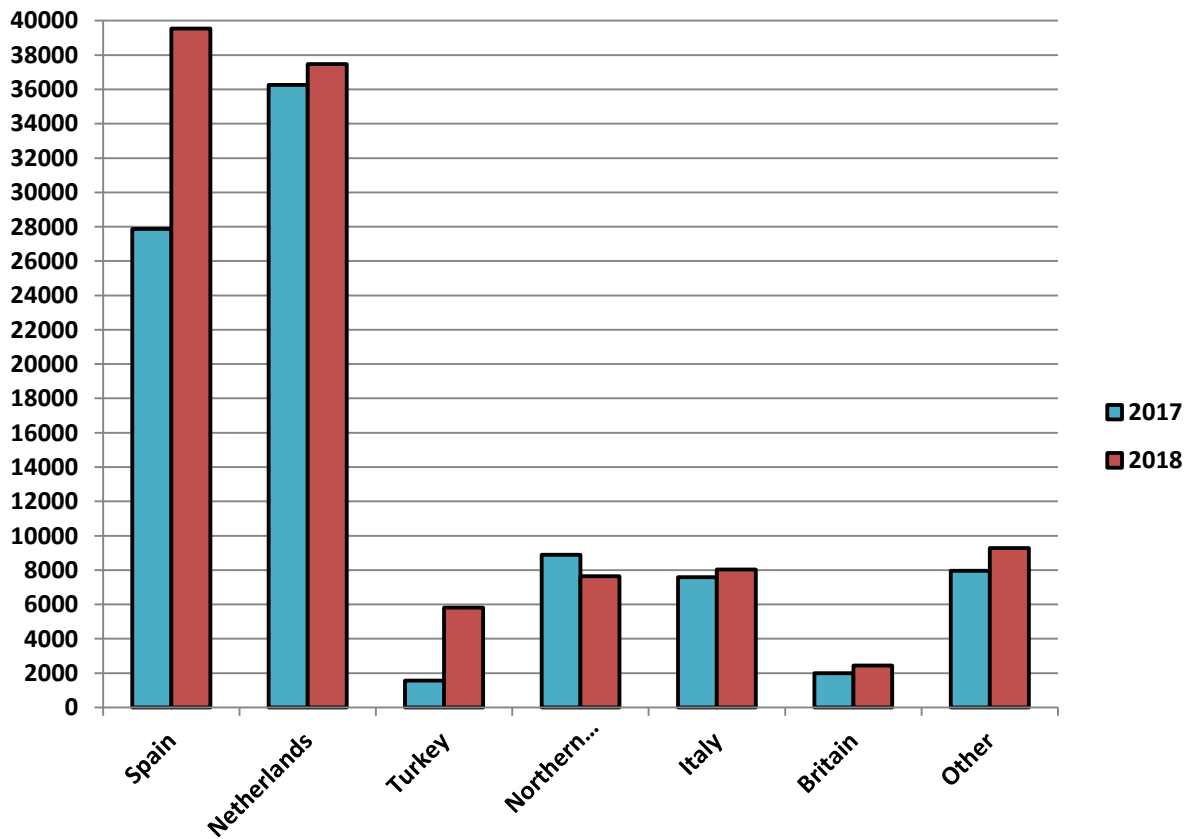
**Cumulative beef exports to Dec 2017, €000 (CSO figures)**



Cattle exported, w/c 23/04/18

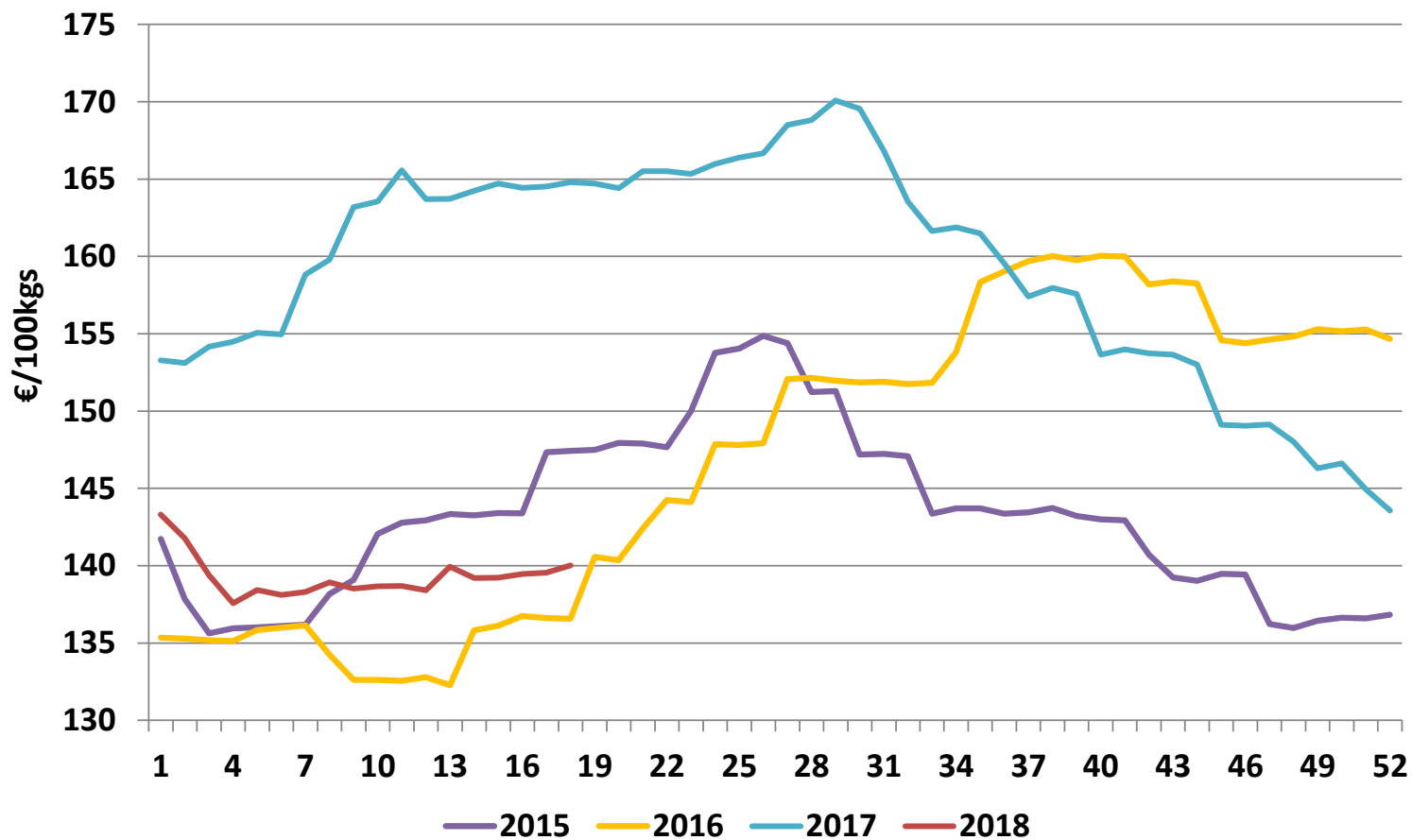


Cumulative cattle export figures, 2018

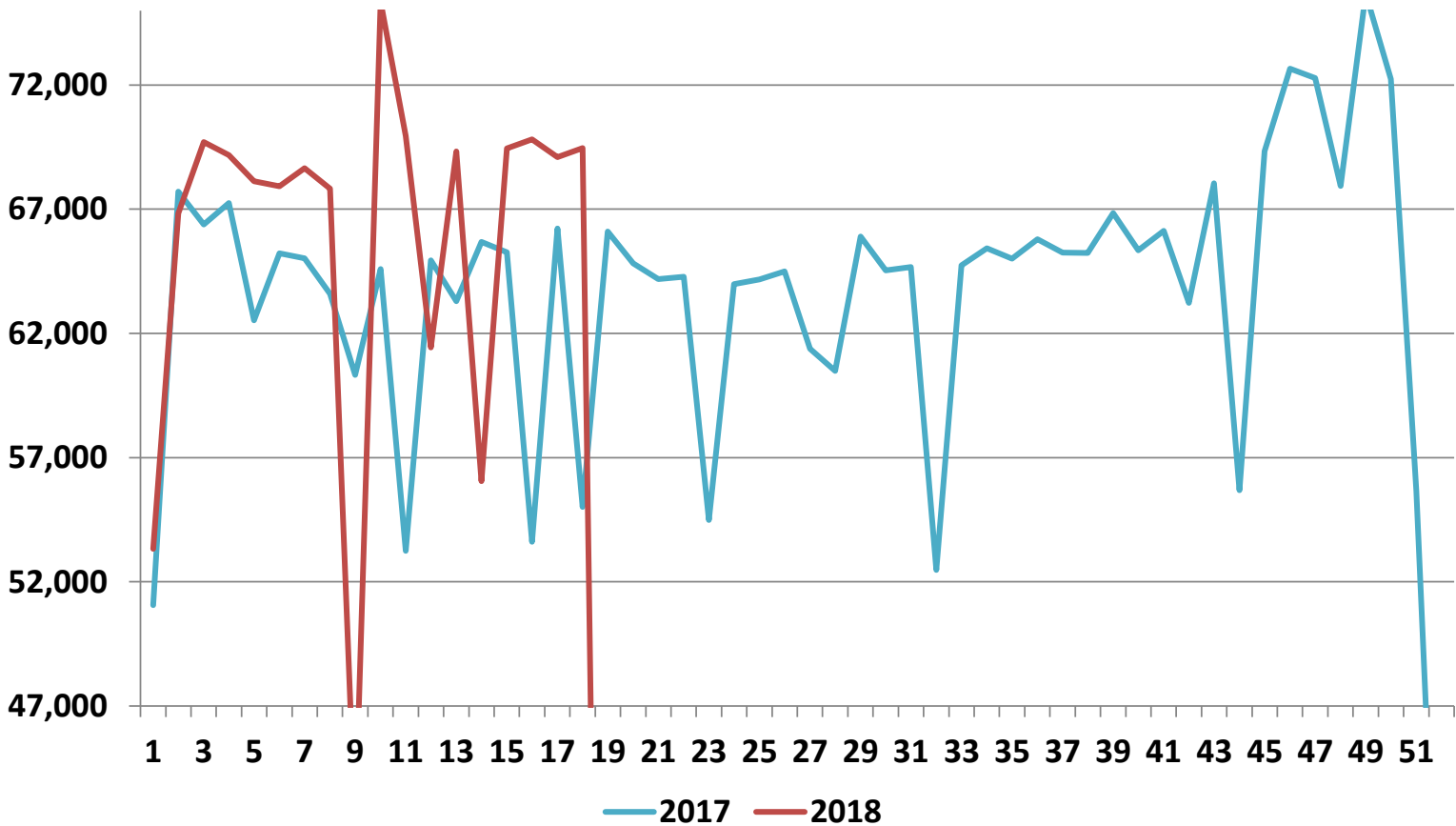


Irish Average Grade E Pig Prices - €/100kgs						
Week	2018	Weekly %	% change	2017	2016	2015
1	143.31		-6.5%	153.27	135.34	141.72
2	141.76	-1.1%	-7.4%	153.10	135.28	137.83
3	139.39	-1.7%	-9.6%	154.17	135.18	135.62
4	137.57	-1.3%	-10.9%	154.48	135.12	135.95
5	138.43	0.6%	-10.7%	155.06	135.84	136.01
6	138.10	-0.2%	-10.9%	154.96	135.98	136.10
7	138.30	0.1%	-12.9%	158.82	136.13	136.19
8	138.92	0.4%	-13.1%	159.79	134.25	138.17
9	138.51	-0.3%	-15.1%	163.19	132.61	139.08
10	138.66	0.1%	-15.2%	163.55	132.61	142.06
11	138.69	0.0%	-16.2%	165.58	132.55	142.79
12	138.40	-0.2%	-15.5%	163.71	132.79	142.93
13	139.93	1.1%	-14.5%	163.72	132.27	143.34
14	139.20	-0.5%	-15.3%	164.25	135.82	143.25
15	<b>139.23</b>	0.0%	-15.5%	164.71	136.11	143.40
16	139.47	0.2%	-15.2%	164.43	136.75	143.39
17	139.54	0.1%	-15.2%	164.52	136.62	147.34
18	140.02	0.3%	-15.0%	164.80	136.56	147.43
19				164.71	140.56	147.49
20				164.42	140.36	147.93
21				165.52	142.42	147.89
22				165.50	144.24	147.66
23				165.33	144.11	150.00
24				165.99	147.86	153.77
25				166.39	147.80	154.04
26				166.68	147.91	154.86
27				168.50	152.06	154.38
28				168.83	152.15	151.22
29				170.09	151.95	151.30
30				169.56	151.85	147.19
31				166.84	151.90	147.23
32				163.53	151.74	147.08
33				161.65	151.82	143.37
34				161.88	153.80	143.71
35				161.49	158.35	143.71
36				159.53	159.03	143.37
37				157.41	159.69	143.44
38				157.97	160.01	143.73
39				157.57	159.75	143.21
40				153.65	160.04	143.00
41				154.00	159.99	142.93
42				153.73	158.19	140.72
43				153.64	158.39	139.23
44				153.01	158.26	139.01
45				149.10	154.57	139.48
46				149.04	154.38	139.43
47				149.13	154.63	136.23
48				148.01	154.82	135.97
49				146.30	155.30	136.45
50				146.62	155.16	136.64
51				144.94	155.26	136.60
52				143.57	154.66	136.82
<b>53</b>						135.67

### Average Grade E Pig Price



### Pig Slaughtering Figures



# Pigmeat Industry Overview

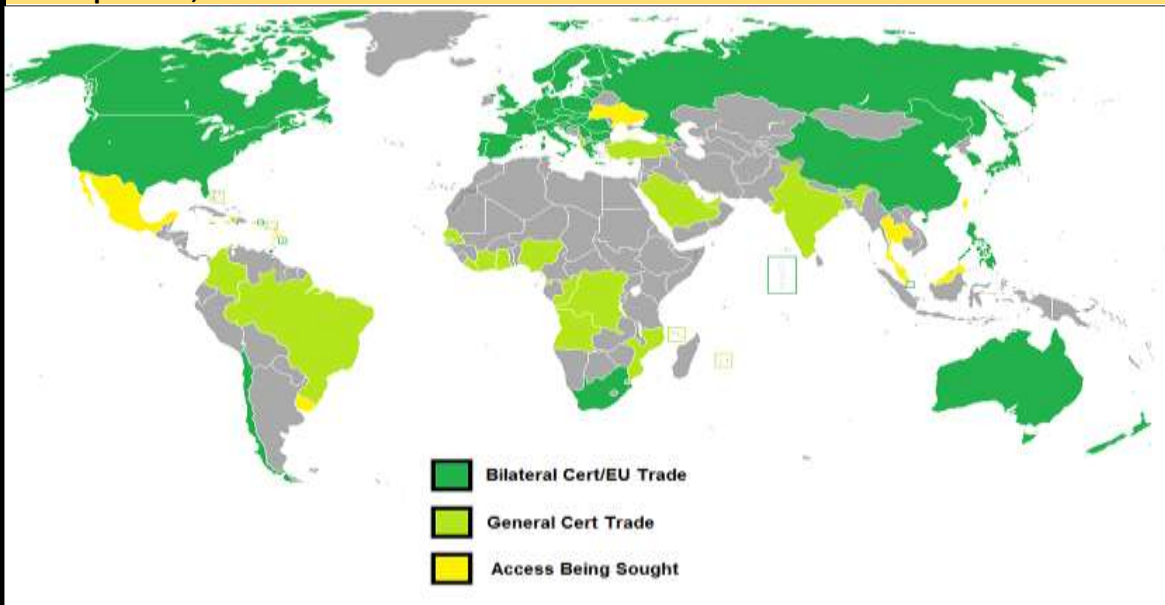
· CSO figures show that last year, Ireland exported 276,000 tonnes of pigmeat products (including prepared food) worth approximately €791m, comprising 6% of overall agri-food exports. This represents a rise of 8% in value terms when compared to 2016.

· Ireland's largest export market by far was the United Kingdom, accounting for approximately 56% of the total, followed by China, at 7%. Denmark, Germany and Japan were next, together comprising roughly 1.25% of export values.

· The Irish pig industry is characterised by large, indoor commercial farms with no 'bought in' animals. However, roughly 1,500 small scale farmers are registered with the Department of Agriculture, so a modest outdoor sector does exist.

· In 2017, 3.3m pigs were slaughtered in Irish export-approved plants, a rise of 1.2% compared to the previous year.

· Irish pigmeat exporters have access to a wide range of markets across the globe, as can be seen in the map below;



· EU production is predicted hold steady into 2019, exports to drop, imports rise and consumption to stay the same, according to the EU Commission's short-term outlook. The EU pig herd grew by 1.4% last year by head count. However, a decline in volume of 0.8% was observed. EU exports globally are projected to rise by 2.5% this year.

· EU Exports to China declined by 9% to 2.6m tonnes following the all-time highs of 2016, but still remained well above the 2015 levels. China accounted for 28% of EU exports last year, down 10% from 2016. The EU supplied 56% of China's pork imports last year.

· In April, China announced the imposition of 25% tariffs on US pork imports in retaliation for American tariffs on Chinese metals.

· According to OECD figures, the EU is the world's largest consumer of pigmeat at 32.5kg per capita, followed closely by China (30.8kg), Vietnam (29kg), South Korea (28.7kg) and the USA (23.6kg). In general terms, consumption is high in Europe, East Asia and the Americas, and low in the Islamic world and Africa.



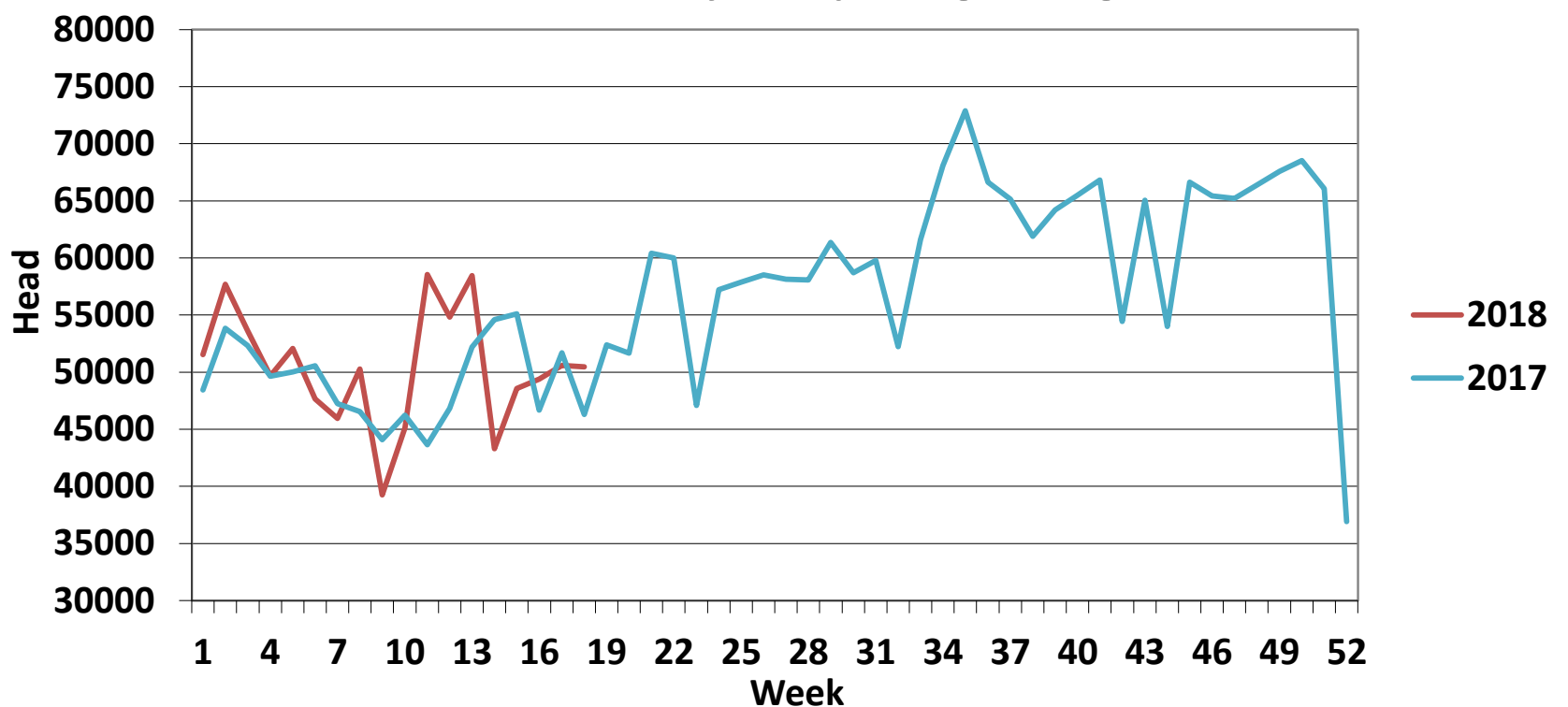
**Pig Slaughtering Figures at Export Approved Plants**

2018							2017				
Week	Pigs	Sows	Total	Cum	2018v2017	% Diff	Week	Pigs	Sows	Total	Cum
1	51,490	1,839	53,329	53,329	2,278	4%	1	49,383	1,668	51,051	51,051
2	64,796	2,031	66,827	120,156	1,397	1%	2	65,598	2,110	67,708	118,759
3	68,008	1,702	69,710	189,866	4,724	3%	3	64,274	2,109	66,383	185,142
4	67,302	1,883	69,185	259,051	6,667	3%	4	65,467	1,775	67,242	252,384
5	65,886	2,242	68,128	327,179	12,275	4%	5	60,873	1,647	62,520	314,904
6	66,072	1,852	67,924	395,103	14,969	4%	6	63,771	1,459	65,230	380,134
7	66,751	1,903	68,654	463,757	18,596	4%	7	63,289	1,738	65,027	445,161
8	65,920	1,905	67,825	531,582	22,825	4%	8	61,999	1,597	63,596	508,757
9	41,794	359	42,153	573,735	4,657	1%	9	58,513	1,808	60,321	569,078
10	72,970	2,385	75,355	649,090	15,415	2%	10	63,238	1,359	64,597	633,675
11	68,008	1,937	69,945	719,035	32,121	5%	11	51,558	1,681	53,239	686,914
12	59,506	1,925	61,431	780,466	28,610	4%	12	63,182	1,760	64,942	751,856
13	67,692	1,634	69,326	849,792	34,641	4%	13	61,444	1,851	63,295	815,151
14	54,379	1,673	56,052	905,844	25,012	3%	14	63,895	1,786	65,681	880,832
15	67,346	2,105	69,451	975,295	29,193	3%	15	63,474	1,796	65,270	946,102
16	67,791	2,022	69,813	1,045,108	45,396	5%	16	51,998	1,612	53,610	999,712
17	67,224	1,875	69,099	1,114,207	48,275	5%	17	63,977	2,243	66,220	1,065,932
18	67,453	2,011	69,464	1,183,671	62,728	6%	18	53,557	1,454	55,011	1,120,943
19							19	64,247	1,850	66,097	1,187,040
20							20	63,028	1,786	64,814	1,251,854
21							21	62,150	2,039	64,189	1,316,043
22							22	62,840	1,444	64,284	1,380,327
23							23	52,834	1,645	54,479	1,434,806
24							24	62,294	1,686	63,980	1,498,786
25							25	62,455	1,713	64,168	1,562,954
26							26	62,554	1,941	64,495	1,627,449
27							27	59,582	1,802	61,384	1,688,833
28							28	58,904	1,587	60,491	1,749,324
29							29	64,112	1,790	65,902	1,815,226
30							30	62,572	1,967	64,539	1,879,765
31							31	62,929	1,745	64,674	1,944,439
32							32	50,933	1,545	52,478	1,996,917
33							33	62,812	1,928	64,740	2,061,657
34							34	63,823	1,603	65,426	2,127,083
35							35	62,962	2,045	65,007	2,192,090
36							36	63,686	2,109	65,795	2,257,885
37							37	63,255	1,990	65,245	2,323,130
38							38	63,581	1,659	65,240	2,388,370
39							39	64,972	1,878	66,850	2,455,220
40							40	63,493	1,850	65,343	2,520,563
41							41	64,269	1,863	66,132	2,586,695
42							42	61,459	1,770	63,229	2,649,924
43							43	66,014	2,035	68,049	2,717,973
44							44	53,954	1,733	55,687	2,773,660
45							45	67,519	1,823	69,342	2,843,002
46							46	70,899	1,763	72,662	2,915,664
47							47	70,337	1,951	72,288	2,987,952
48							48	66,269	1,671	67,940	3,055,892
49							49	73,743	1,936	75,679	3,131,571
50							50	69,984	2,251	72,235	3,203,806
51							51	55,083	590	55,673	3,259,479
52							52	31,853	901	32,754	3,292,233
53							53				
<b>Overall Total</b>	<b>1,150,388</b>	<b>33,283</b>	<b>1,183,671</b>				<b>Overall Total</b>	<b>3,200,891</b>	<b>91,342</b>	<b>3,292,233</b>	

**REPORT ON SLAUGHTERING AT SHEEP EXPORT PREMISES  
WEEK 18**

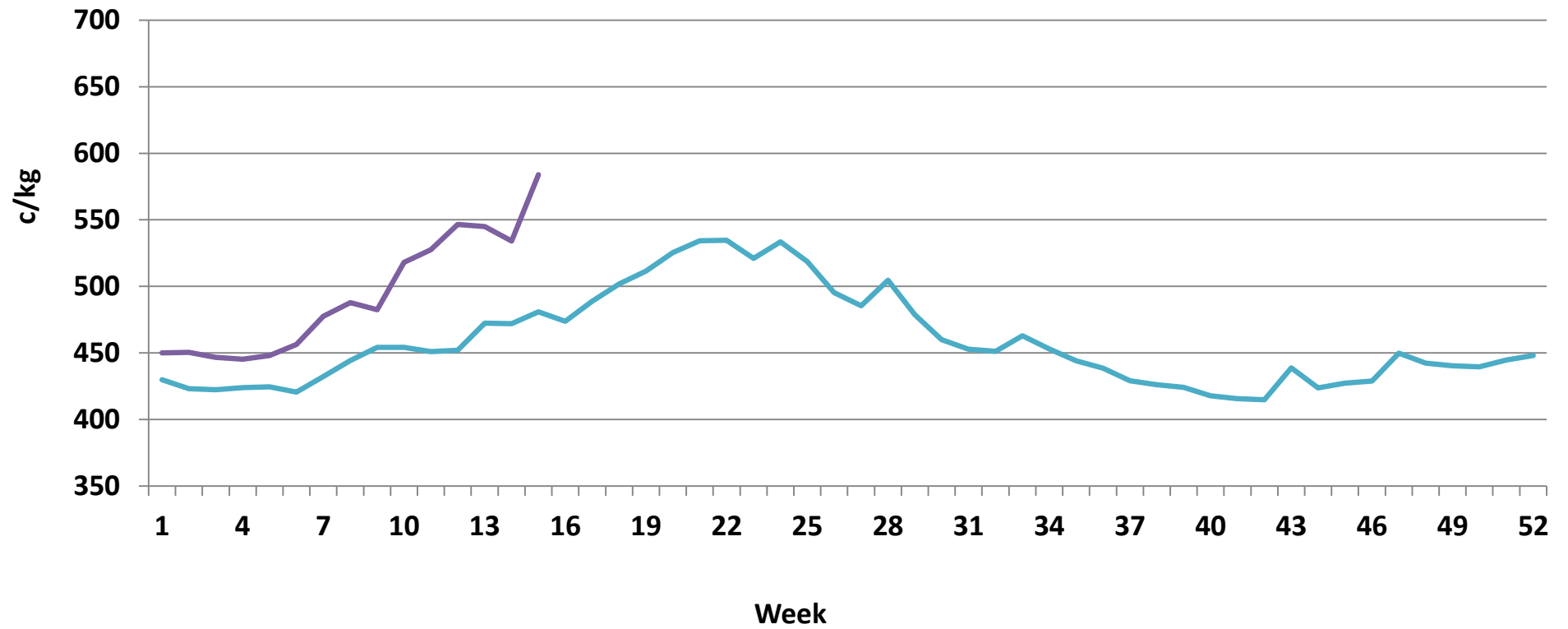
CATEGORY	2018		2017		DIFFERENCE		% Differences 2018 vs 2017	
	Weekly	Cumulative	Weekly	Cumulative	Weekly	Cumulative	Weekly	Cumulative
Lambs/Hoggets	28,901	736,736	25,391	730,521	3510	6,215	14%	1%
Spring Lambs	10,934	23,641	14,379	35,787	-3,445	12,146	-24%	-34%
Ewes and Rams	10,618	146,550	6,521	119,344	4,097	27,206	63%	23%
Light Lambs	5	73	11	388	-6	315	-55%	-81%
<b>TOTAL</b>	<b>50,458</b>	<b>907,000</b>	<b>46,302</b>	<b>886,040</b>	<b>4,156</b>	<b>20,960</b>	<b>9%</b>	<b>2%</b>

**Weekly Sheep Slaughtering**



### Ave. Price €/100 kg for Sheepmeat

— 2017  
— 2018

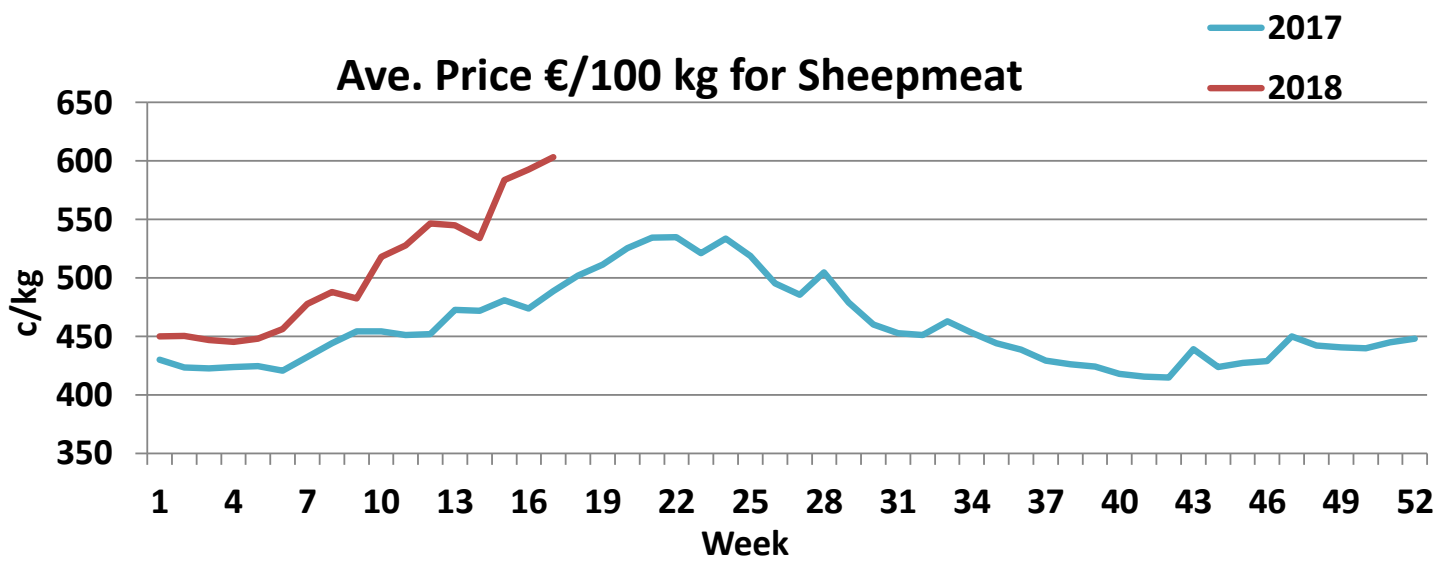


Sheepmeat Information for week 17

Irish Prices €/100 kg	2018	2017	Change
Ave Factory Price	599.16	501.35	19.5%
Ave Mart Price	613.23	459.43	33.5%
National Ave Price	603.38	488.77	23.4%
YTD Ave	505.64	448.26	12.8%

Slaughterings	2018	2017	Change
Weekly	50,582	51,699	-2%
YTD	856,542	839,738	2%

EU Market Rates Heavy Lambs	€/100kg	% of Community Price
Belgium	593.1	98%
Denmark	546.2	90%
Germany	595.9	98%
Spain	521.8	86%
France	625.0	103%
Hungary	555.7	92%
Ireland	603.4	99%
Italy	518.0	85%
Cyprus	477.0	79%
Latvia	342.7	56%
Lithuania	465.4	77%
Netherlands	630.5	104%
Austria	569.0	94%
Poland	391.5	64%
Romania	287.4	47%
Finland	375.8	62%
Sweden	533.5	88%
Northern Ireland	583.1	96%
Great Britain	632.6	104%
United Kingdom	629.1	104%
Community	607.2	100%





Comparison of Poultry Slaughter Figures Between 2018 and 2017						
WEEK	2018 weekly	2018 cumulative	2017 weekly	2017 cumulative	2017 v 2018	% difference
1	1,625,961	1,625,961	1,800,752	1,800,752	-174,791	-9.7%
2	1,969,356	3,595,317	1,855,926	3,656,678	-61,361	-1.7%
3	1,932,194	5,527,511	1,904,859	5,561,537	-34,026	-0.6%
4	1,886,770	7,414,281	1,885,286	7,446,823	-32,542	-0.4%
5	1,800,824	9,215,105	1,831,229	9,278,052	-62,947	-0.7%
6	1,813,024	11,028,129	1,777,430	11,055,482	-27,353	-0.2%
7	1,808,499	12,836,628	1,859,200	12,914,682	-78,054	-0.6%
8	1,922,060	14,758,688	1,808,065	14,722,747	35,941	0.2%
9	1,557,975	16,316,663	1,768,257	16,491,004	-174,341	-1.1%
10	2,159,284	18,475,947	1,842,204	18,333,208	142,739	0.8%
11	1,957,072	20,433,019	1,709,219	20,042,427	390,592	1.9%
12	1,734,665	22,126,409	1,868,499	21,910,926	215,483	1.0%
13	1,874,839	24,001,248	1,823,125	23,734,051	267,197	1.1%
14	1,755,145	25,756,393	1,766,109	25,500,160	256,233	1.0%
15	1,963,967	27,720,360	1,770,716	27,270,876	449,484	1.6%
16	2,008,587	29,728,947	1,654,606	28,925,482	803,465	2.8%
17	1,994,979	31,723,926	1,969,576	30,895,058	828,868	2.7%
18						
19						
20						
21						
22						
23						
24						
25						
26						
27						
28						
29						
30						
31						
32						
33						
34						
35						
36						
37						
38						
39						
40						
41						
42						
43						
44						
45						
46						
47						
48						
49						
50						
51						
52						